

## REPAIR WAX

### INSTRUCTIONS FOR USE

Please read all instructions before you begin.

---

#### CONTENT

---

- 7 wax blocks
- 1 melter
- 1 scraper/cleaning comb
- 1 green/white pad
- 1 grey sanding pad

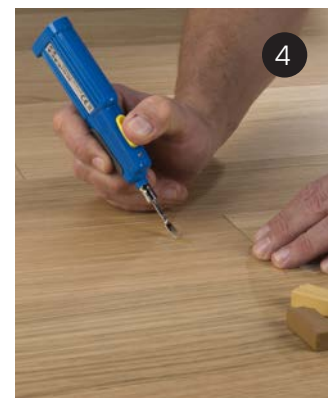
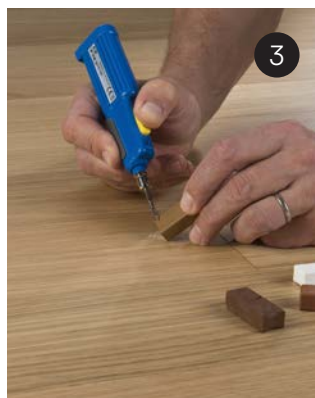
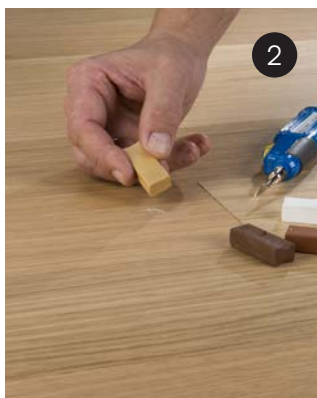
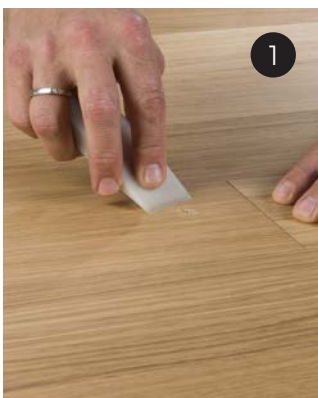


---

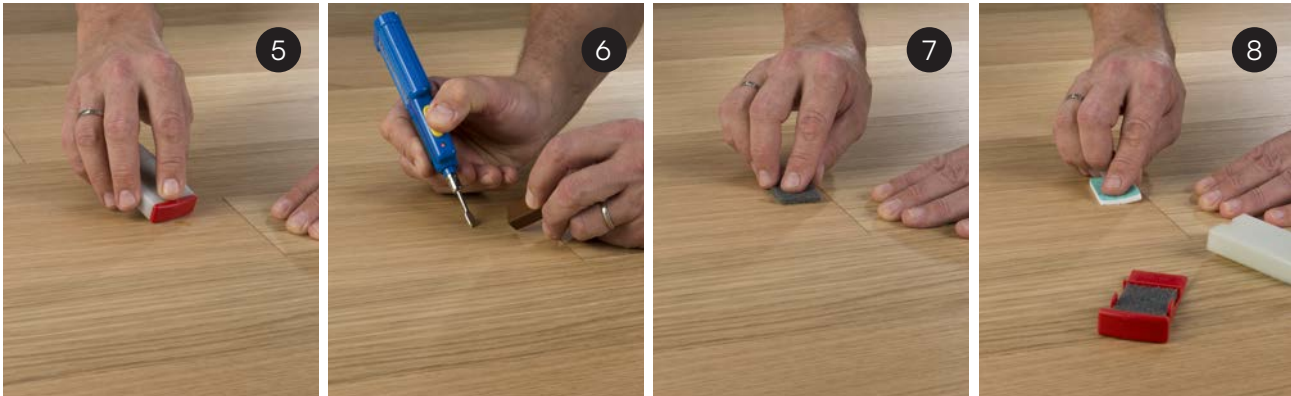
#### INSTRUCTIONS

---

- 1. PREPARING:** The area to be repaired has to be clean, dry and free from grease. If necessary, remove any loose or sticking out particles with a pointed item.
- 2. CHOOSE COLOURS:** Choose colours according to the indications in the colour chart (see [www.par-ky.com](http://www.par-ky.com) or [www.cabbani.com](http://www.cabbani.com)). Begin with the 'starter colour' and mix in further (usually darker) colours.
- 3. MELTING AND MIXING:** Activate the melter by removing the protective cap, sliding the yellow button to 'ON' and pressing the blue button (10 to 15 seconds). Ensure that the tip is fitted correctly. A red light indicates that the melter is heating up. Melt off small portions of the colour sticks and mix together. Should the hard wax start smoking during melting, release the blue button. Tip cools slowly. Do not touch the tip during operation. The melter has a heat capacity of 30 minutes when operated permanently. However it is recommended to work at shorter intervals and to switch off tool from time to time.
- 4. FILLING:** Let wax mixture flow into the damaged area. Always slightly overfill the area!



5. **LEVELLING:** Use the sharp grooves of the scraper to strip off excess material.
6. **PRECISE ADJUSTMENT:** For precise adjustment, restore the grain pattern of the filled area by slightly scratching with a pointed item and re-fill with a darker colour stick. Level off excess material with the planer grooves of the scraper.
7. **DEGREASING:** Use the grey sanding pad to degrease the area. The gloss level of the mixture becomes matt.
8. **GLOSS LEVEL ADJUSTMENT:** The gloss level can be adjusted with the green/white pad. The green side of the cloth polishes while the white side reduces the gloss level.



**CLEANING:** Use the cleaning comb to clean the planer grooves. Just wipe off melting knife with a cloth after use.

**STORAGE:** Always store melter with cap fitted and ensure ON/OFF switch is set to OFF position. Make sure the tip has cooled down before storage. Never bring the tool into contact with water.

**RECYCLING:** The melter needs to be delivered to a collection point for electronic scrap to ensure optimal recycling.

**ATTENTION!** The melting knife heats up very quickly. Danger of burns. Cool down period is one minute. As soon as the melting knife is heated, the filling material can be liquefied.

**PARKY**<sup>®</sup>  
wood flooring's finest

If you have any questions, don't hesitate to contact your local dealer or the head office in Belgium.

Decospan nv, Industriezone Grensland  
Lageweg 33, 8930 Menen - Belgium  
tel +32 56 52 88 49 - info@par-ky.com  
www.par-ky.com

**DECOSPAN**<sup>®</sup>